

30/50/100 W LED Flood light

Features:

No UV or IR radiation

Hight-Brightness SMD LED

High energy efficiency, low power consumption

Long life span, low temperature rising

120° Beaming angle

Applicable: For home, office, meeting room, hotels, cabinet, shopping mall and show windows, parke, shop hoardings, parking lots ect.

Attention:

All the LED products should not be immersed r for long time.

Make sure the products are out the reach of children

Please don't install in flammable, explosive or corrosive circumstances.

If you found the glass cracks have appeared or broken, please change in time.

Technical Data:

LFL-30 W	LFL-50 W	LFL-100 W
LED chip: Chengyuan LED driver: driverless Lamp power: 30 W Voltage: 220-240 V Lumen: 60-70 lm/W PF: ≥0.9 Color of LED: Warm white 6000K IP66 Energy class: A	LED chip: Chengyuan LED driver: driverless Lamp power: 50 W Voltage: 220-240 V Lumen: 60-70 lm/W PF: ≥0.9 Color of LED: Warm white 6000K IP66 Energy class: A	LED chip: Chengyuan LED driver: driverless Lamp power: 100 W Voltage: 220-240 V Lumen: 60-70 lm/W PF: ≥0.9 Color of LED: Warm white 6000K IP66 Energy class: A

Product Detail

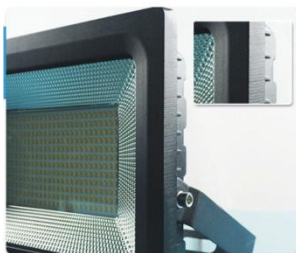


More chips with larger area of lighting Uniform light



Light guide

High quality Light guide, effectively enhance the brightness of the chip



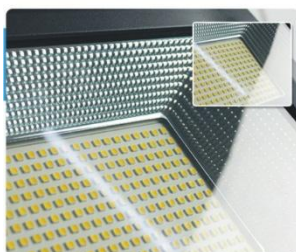
High quality aluminum

Selection of high-quality aluminum, multi process Wear-resisting



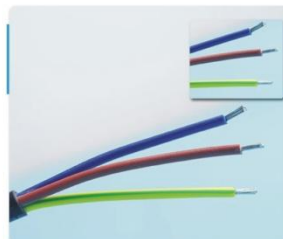
Blade cooling

New blade type heat dissipation design, ensure the lamp work can be good heat dissipation



Toughened glass

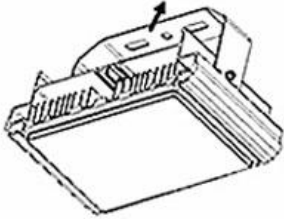
With new wear-resistant, tempered glass, effective Protection chip



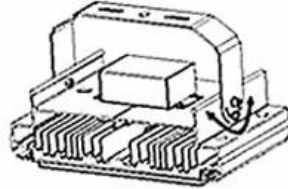
Live Wire
Neutral Wire
Earth Wire

Red line is Live Wire
Blue line is Neutral Wire
Yellow green line is Earth Wire

Installation



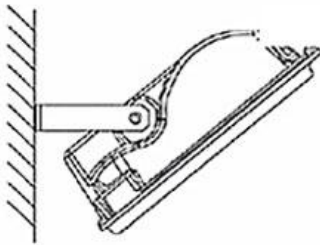
1. Install in fixed position



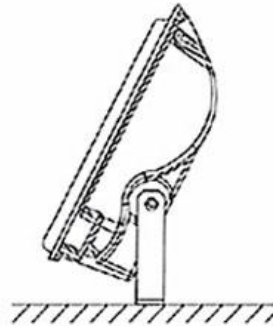
2. Can adjust angle



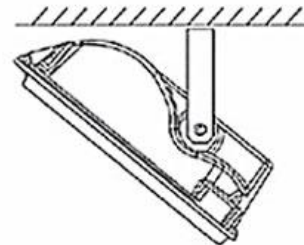
3. Connection power



Wall mounted installation



Pedestal mounting



Ceiling mounted